

# STONGRATE

FIBREGLASS COMPOSITES

## CABLE MANAGEMENT SYSTEMS

Stongrate Fibre Reinforced Plastics (FRP) cable management systems are increasingly being considered as a superior material of construction in many fields. Therefore, FRP has proven to be immensely beneficial in a wide range of applications such as cable management.

Stongrate FRP cable management systems are manufactured for a comprehensive array of cable management requirements, our systems are designed and manufactured with sturdy but light-weight components, making handling and installation of these systems easy and effortless.

## FEATURES

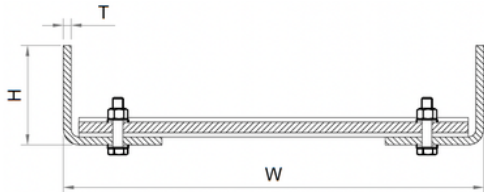
- Corrosion Resistant
- High Load Capacity Over Long Spans
- Lightweight
- Easy Installation
- Non-conductive
- UV Stable

## INDUSTRIES

- Metals & Mining
- Construction Engineering & Transportation
- Petrochemical Engineering
- Food & Beverage
- Oil & Gas

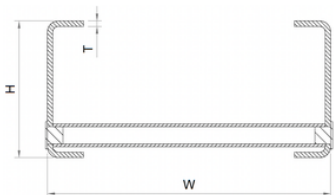
## CABLE LADDER TYPES & DIMENSIONS

Stongrate offers a full range of Cable management systems in varied sizes including accessories to suit any requirement. Stongrate provides two types of cable support systems - ladder cable tray and perforated cable tray.



<b>H</b>	50	50
<b>W</b>	150	300
<b>T</b>	6	6
<b>Support</b>	2M	2M

<b>H</b>	75	75	75
<b>W</b>	150	300	450
<b>T</b>	6	6	6
<b>Support</b>	2M	2M	2M



<b>H</b>	100	100	100	100
<b>W</b>	150	300	450	600
<b>T</b>	6	6	6	6
<b>Support</b>	3M	3M	3M	3M

<b>H</b>	150	150	150	150	150	150
<b>W</b>	150	300	450	600	750	900
<b>T</b>	6	6	6	6	6	6
<b>Support</b>	6M	6M	6M	6M	6M	6M



## WORKING LOAD CAPACITY

The working load capacity represents the ability of a fibreglass cable tray to support the static weight of cables. It is equivalent to destructive load capacity, with minimum safety factor of 1.5.

Width of Cable Tray	Side Rail	Load Kg/Mtr. For Support span 2.0 Mtr.
150mm	75	35
300mm	75	65
450mm	100	85
600mm	100	95
750mm	100	125
900mm	150	155

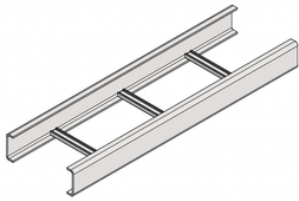
Concentrated Static Load is 70 Kg. at the centre of the span.

## AS PER NEMA LOADING STANDARDS:

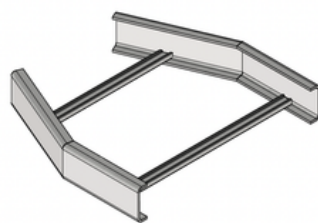
Load	Kgs/Mtr	Side Rail	Load Class
A	74	75	8A
B	111	100	8C, 12C, 16A
C	148	150	12C, 16B, 20A, 20C

Support span: 8, 10, 12 are in Feet.

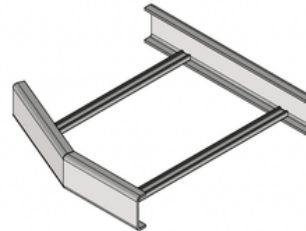
## CABLE TRAY ARRANGEMENTS



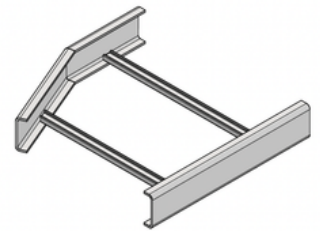
STRAIGHT



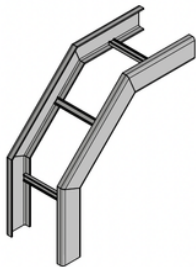
STRAIGHT REDUCER



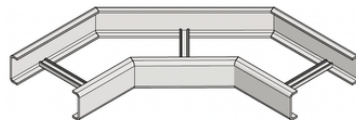
RIGHT REDUCER



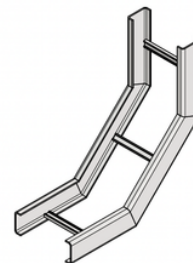
LEFT REDUCER



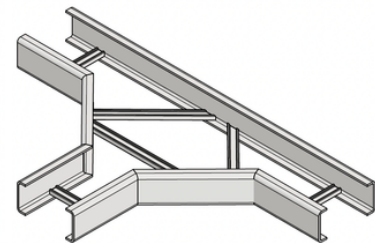
EXTERNAL BEND



HORIZONTAL BEND



INTERNAL BEND



TEE

## STANDARDS

- NEMA FG-1 1984-1993 (Current Issue) Specification for Fibreglass Tray System – Loading Characteristics
- ASTM E-84 Flame Spread rating of 25 or less

## INSTALLATION GUIDELINES

Installation of Stongrate Cable Tray Systems must follow the National Electric Code and the latest NEMA FG-1 guidelines. Avoid applying excessive pressure when sawing, drilling, routing, or performing similar operations. For optimal performance and extended tool life, use carbide-tipped drill bits and saw blades.

The use of lubricants during machining is not recommended. To prevent chipping at cut edges, ensure that cable trays and fittings are properly secured during all field-cutting procedures. Always follow the instructions on product labels carefully.

For the strongest and most reliable joints, a combination of mechanical fasteners and approved adhesives is recommended.